

jugendtreff

jugendzentrum alfeld/ leine

planungszeitraum:
bauherr:
leistungen:

ab 04 / 2013
stadt alfeld/ leine
lph 1-9

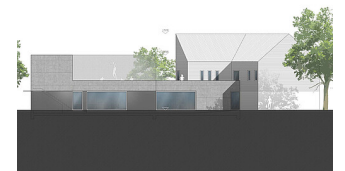
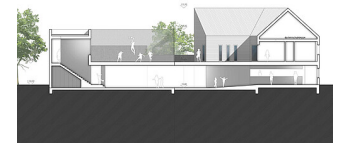
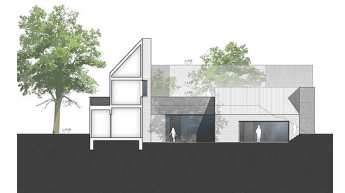


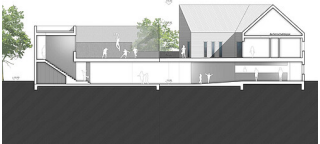
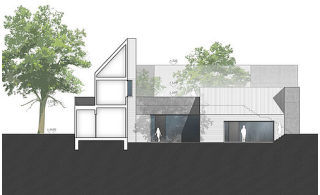
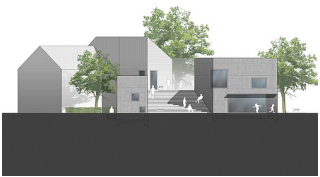
jugendtreff

k s w

architekten + stadtplaner gmbh

borkumer str. 22
30163 hannover
t 0511. 300 389 400
f 0511. 300 389 411
mail@ksw-architekten.com
www.ksw-architekten.com





k s w

architekten + stadtplaner gmbh